



# Northridge Elementary Weekly Blast

12/8/17

## **Important Dates and Information:**

- [Important Dates for the year](#)
- Nominate a staff member for the Apple Awards. Click [here](#) for the form.

## **Hours and Numbers:**

School Hours: 8:35am - 3:30pm  
AM Kdg: 8:35am - 11:35am  
PM Kdg: 12:30pm - 3:30pm  
Office Hours: 8:00am - 4:00pm  
Attendance Line: 303-387-6527  
Office Phone: 303 387-6525

## **PTA INFO:**

### **Upcoming Events:**

Mark your calendar for our upcoming Community Breakfast:

### **Grandparents & GrandFriends Coffee**

Thursday January 11

7:45 - 8:30AM @ NRE GYM

All Grandparents and Grandfriends or any special adult are invited to attend with their NRE Students for coffee, juice, and breakfast treats.

Donut, Muffins, & Juice Donations greatly encouraged

## **Notes from Administration:**

Dear NRE Community,

It's been a wonderful week at NRE and I can't believe it is already Friday. We have such a fabulous school that we ran over on our PRIDE assemblies today because we were honoring so many students. Thank you for raising such great kids who care for one another and do the right thing, at the right place, at the right time, when no one was watching.

Today was a delightful day because we had 4 extra principals in the office. Principal Le, Principal

Another Way to Support NRE:

**Help us shrink the size of NRE's Lost & Found Pile!**

**NEW Fundraiser : Mabel's Labels - Labels for Stuff Kids Lose**

Mabel's Labels are personalized, peel & stick, super-durable labels that safely go in the laundry, dishwasher and microwave. They're loved by parents & kids alike. And they're perfect for all your kids' stuff – from shoes & clothes to water bottles, lunch boxes, backpacks and more!

Order Here: [campaigns.mabelslabels.com](http://campaigns.mabelslabels.com) and select Northridge Elementary PTA (Highlands Ranch)

NRE PTA gets 20% of all sales!

Owain, Assistant Principal Nathaniel and Assistant Principal Tyson got to spend the day with Mrs. Schmidt and myself. They helped with the PRIDE assembly, Popcorn Friday, organized PRIDE bracelets and even helped with the Fire Drill and Shelter in Place Drill. We could use their help every day :)

We only have 9 more days until Winter Break and then we have finished a full semester together. It's been a busy, wonderful adventure so far and I cannot thank you enough for all of your support. Please enjoy the weekend with your family.

Sincerely,  
Katie Lynch  
Principal



**NORTHRIDGE DBC  
Seed and Bulb  
FUNDRAISER**

*Give Green Gifts this Holiday Season  
Perfect for Family, Neighbors, and Teachers*

**Order Your Garden Today!  
[seeds.nredbc.org](http://seeds.nredbc.org)**

Questions about this DBC fundraiser?  
See our Fundraiser FAQs on the back!

**Northridge DBC Seed and Bulb Fundraiser FAQs**

**What is Northridge DBC?**

DBC stands for the Discovery Booster Club. The DBC is a parent volunteer organization at Northridge Elementary and a nonprofit chapter of the Foundation for Douglas County Schools. DBC raises money, organizes community events, and recruits volunteers to support the Discovery Program at Northridge.

**What is the goal of this fundraiser?**

The goal of this fundraiser is to raise \$1,000 this year. These funds will be used to support the Discovery Program, including the purchase of classroom materials, technology updates, and special events.

**How does this fundraiser work?**

This fundraiser starts Friday, December 1, 2017 and ends Friday, Dec 22, 2017.

Customers visit our online seed and bulb catalog. The catalog includes a variety of popular flowers, vegetables and bulbs.

Customers pay for their orders online. **There are no paper forms!**

Customers will not be charged until their order is shipped. Orders will be shipped directly to the customers' doorstep!

DBC receives 50% of all purchases at the end of the fundraiser.

**How much is shipping?**

Shipping costs a flat \$6 per order, no matter how much you order.

**How will my order be shipped?**

Orders will be shipped via Smartpost, a service offered by FedEx and the US Postal Service. FedEx delivers the orders to a US Postal Service center, and the actual delivery of the order is made by Postal Carriers.

**NOTE:** please make sure ALL shipping addresses must be U.S. Postal Service friendly.

**When will my order arrive?**

Shipping begins in mid-April and continues through May. Flower Power Fundraising will ship all orders directly to an U.S. mailing address in the lower 48 states, except for Utah (sorry Utah!).

**What if I'm not happy with my order?**

Flower Power Fundraising guarantees a 100% refund or replacement if you are not satisfied with your order in any way.

**Additional questions?**

Visit our website for more details at [dbcsseeds.nredbc.org](http://dbcsseeds.nredbc.org). Or email the DBC Board at [info@nredbc.org](mailto:info@nredbc.org).

**District Information:**

**SAC News:**

The next SAC meeting will be in January. Please don't hesitate to reach out to any of the SAC members with questions prior to January 19th.

**Upcoming SAC Meeting Dates:**

January 19, February 23, March 16, April 13, May 18



## Douglas County School District 2018-2019 BUDGET PRIORITIES

The DAC updated the Budget Priority Process for the 2018-2019 fiscal year by providing a new online survey and offering additional education and collaboration opportunities for DAC and staff. These opportunities provided context and helped clarify what the District's long-term budget needs. The process was designed to ensure additional transparency and collaboration.

The education process included a series of the online videos prepared by CDO staff, offering an overview of what responses are being managed by schools. The DAC also hosted a Special Budget Session allowing community members an opportunity to ask CDO staff specific questions about the impact of budgetary decisions.

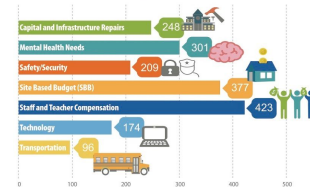
SACs were encouraged to watch the online videos, attend the Special Budget Session, and to meet with a school leader community and as individual SACs. Each SAC was also encouraged to share a video about the current budget priorities and the DAC's role about the District. Budgetary decisions might have on their school prior to completing the online survey.

### The Online Survey

Please rank the following items 1 through 7, with 1 indicating the most important element and 7 indicating the least important element to your school. List is alphabetical.

- **Capital and Infrastructure Repairs Enhancements** (including technology for: new carpet, roof repairs, painting, boiler replacement, etc.)
- **Mental Health** (i.e. additional counseling, student & parent education, training, etc.)
- **Safety/Security** (i.e. door locks, key cards, additional cameras, etc.)
- **Site Based Budget** (Additional SBB to schools for: for additional staff, additional computing options, more support for other non-core tasks, etc.)
- **Staff and Teacher Compensation**
- **Technology** (i.e. additional computers in schools, etc.)
- **Transportation** (i.e. increased fleet operations, vehicle maintenance, purchase of newer additional buses, etc.)

### District Wide Total Scaled Results TOTAL NUMBER OF SAC RESPONSES: 65



Budget Priority Response Totals\*

\*Each response worth 1 or multiple votes