

DOUGLAS COUNTY SCHOOL DISTRICT RE 1

FINANCIAL PLAN AND BUDGET
FISCAL YEAR 2008-2009



*50 Years of
Teaching Excellence
1958 - 2008*

Tonight's Agenda

- **Approval & Adoption of All Funds FY 2008-09 Budgets**
- **Budget Resolution FY 2008-09**
- **Appropriation Resolution FY 2008-09**
- **Resolution Authorizing Use of Beginning Fund Balance FY 2008-09**
- **Resolution Authorizing Inter - Fund Borrowing FY 2008-09**

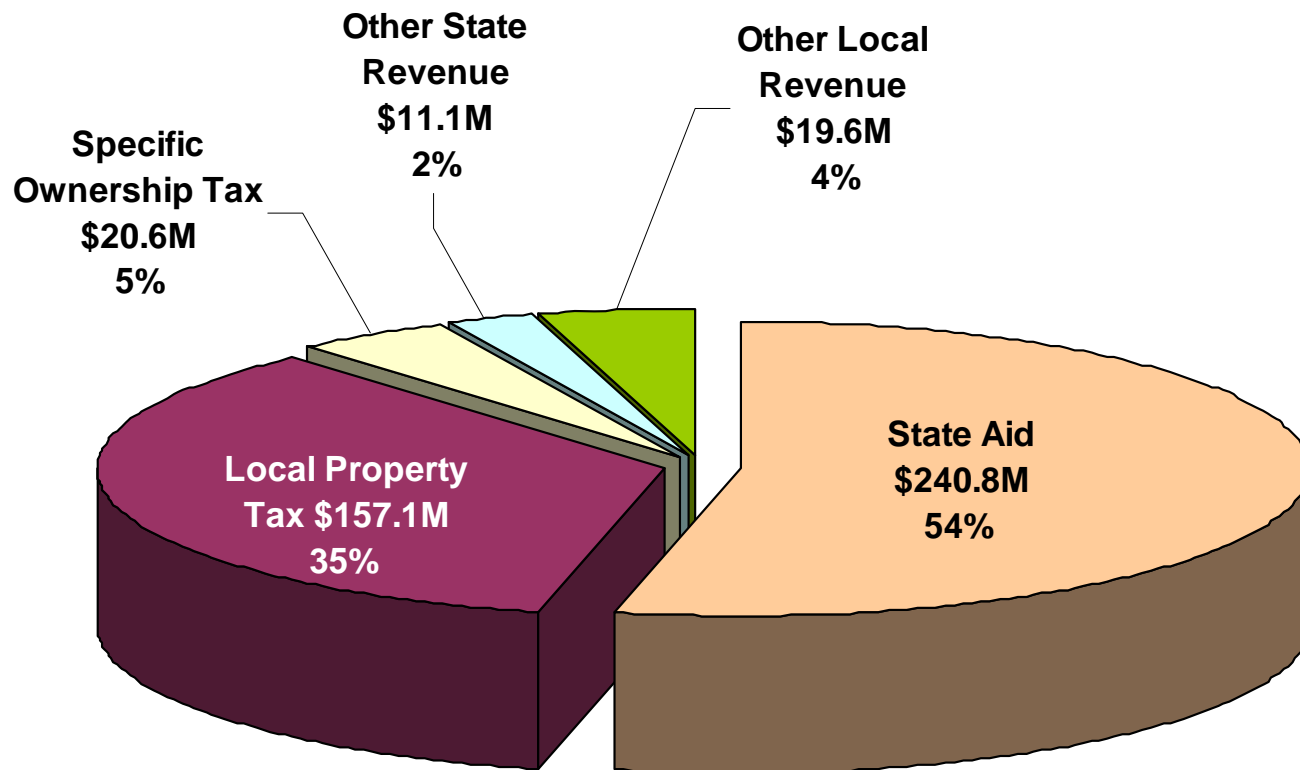
FY 2008-2009 General Fund Assumptions

- **Per-Pupil Revenue: \$6,646**
- **Inflation Rate 2.2% for FY09**
- **Total Student Count increase to 58,962 from 52,013 in FY07-08**
- **Funded Pupil Count increase to 56,331 from 49,695 in FY07-08**

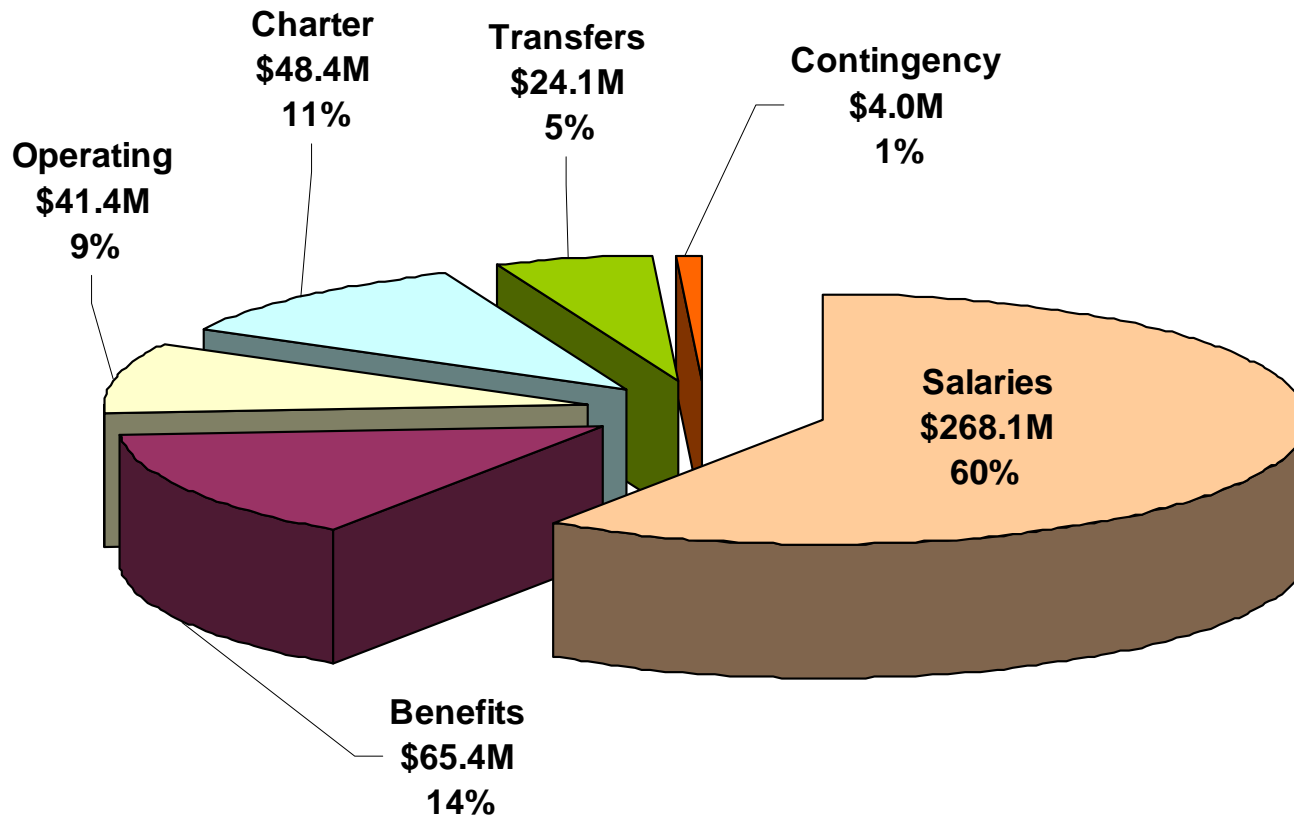
FY 2008-2009 General Fund Personnel Summary

<u>Employee Group</u>	Budgeted FTE <u>2004-05</u>	Budgeted FTE <u>2005-06</u>	Budgeted FTE <u>2006-07</u>	Budgeted FTE <u>2007-08</u>	June Budgeted FTE <u>2008-09</u>	% of Total <u>2008-09</u>
100-ADMINISTRATIVE STAFF						
Total Administrative Staff	167.36	176.36	186.80	205.47	203.29	3.94%
200-CERTIFIED STAFF						
Total Certified Staff	2,602.42	2,705.07	2,934.44	3,144.43	3,188.82	61.82%
300-PROFESSIONAL/TECHNICAL STAFF						
Total Professional/Technical Staff	82.72	87.72	70.23	68.93	66.67	1.29%
400-600 CLASSIFIED STAFF						
Total 400 - Clerical Staff	528.96	532.96	556.61	646.98	680.95	13.20%
Total 500 - School Office/Instr Support	302.50	304.10	370.54	413.25	409.59	7.94%
Total 600 - Support Services	495.42	540.92	566.94	555.25	609.28	11.81%
GRAND TOTAL	4,179.38	4,347.13	4,685.56	5,034.31	5,158.60	100.00%

FY 2008-2009 General Fund Revenue



FY 2008-2009 General Fund Expenditures



General Fund Overview (in millions)

	Budget 2007-08	Budget 2008-09	Incr over Prior Yr
Beginning Fund Balance	\$33.9	\$24.5	(27.7%)
Total Revenue	\$393.3	\$449.2	14.2%
Total Expenditures	<u>\$405.2</u>	<u>\$451.4</u>	11.4%
Ending Fund Balance	\$22.0	\$22.3	1.3%
Ending Fund Balance as % Of Revenue	5.6%	5.0%	

General Fund Percent of Total Budget

Object (in millions)	FY 07-08 Budget	% of Total	FY 08-09 Budget	% of Total
Salaries	\$259.56	64.1%	\$268.10	59.4%
Benefits	58.00	14.3%	65.44	14.5%
Subtotal	317.56	78.4%	333.54	73.9%
Operating	43.50	10.7%	41.44	9.1%
Transfers	42.22	10.4%	72.47	16.1%
Contingency	2.00	0.5%	3.94	0.9%
(Full Day Kindergarten \$2.1M)				
(General Operating \$850K)				
(Schools \$900K)				
Subtotal	87.72	21.6%	117.85	26.1%
TOTAL EXPENDITURES	\$405.28	100.0%	\$451.39	100.0%

General Fund

Revenues & Expenses (in millions)

	Adopted Budget 2007-08	Proposed Budget 2008-09	Budget Inc / Decr Over 2007-08	Percentage Change Over 2007-08
BEGINNING FUND BALANCE	\$33.90	\$24.45	(\$9.45)	-27.7%
REVENUES				
Subtotal - Local Tax Revenues	165.47	177.68	12.21	7.4%
Subtotal - Intergovernmental Revenues	208.54	251.98	43.44	20.8%
Subtotal - Other Local Revenue	19.37	19.58	0.21	1.1%
TOTAL REVENUES	\$393.38	\$449.24	\$55.86	14.2%
Total Program Funding	\$321.04	\$375.44	\$54.40	16.9%
EXPENDITURES				
Salaries	259.56	268.10	8.54	3.3%
Benefits	58.00	65.44	7.44	12.8%
Operating	43.50	41.44	(2.06)	-4.7%
Charter School Transfer (based upon Charter's FPC x PPR)	19.61	20.85	1.24	6.3%
Charter Schools' Share of '03 Override (@ \$251/FPC)	0.57	0.54	(0.03)	-5.3%
Allocation to Hope Online	-	27.00	27.00	0.0%
Capital Reserve Fund Transfer	9.52	11.57	2.05	21.5%
Insurance Reserve Transfer	3.31	2.72	(0.59)	-17.8%
Athletic & Activities Fund Transfer	4.21	4.80	0.59	14.0%
Fund 29 Transfer: Mil Levy Override Fund	5.00	5.00	0.00	0.0%
Contingency ~ Reserve for Schools	0.90	0.90	0.00	0.0%
Contingency ~ Full-Day Kindergarten Program	-	2.18	2.18	0.0%
Contingency ~ General Operating	1.10	0.85	(0.25)	-22.7%
TOTAL EXPENDITURES	\$405.28	\$451.39	\$46.11	11.4%
CHANGE IN FUND BALANCE	(\$11.90)	(\$2.15)	\$9.75	-81.9%
BEGINNING FUND BALANCE	\$33.90	\$24.45	(\$9.45)	-27.9%
ENDING FUND BALANCE	\$22.00	\$22.30	\$0.30	1.3%
Ending Fund Balance - as % of Total Revenues	5.6%	5.0%		

General Fund Five Year Financial Projections (in millions)

	Adopted Budget 2008-09	Projected 2009-10	Projected 2010-11	Projected 2011-12	Projected 2012-13
BEGINNING FUND BALANCE	\$24.5	\$22.3	\$24.0	\$25.6	\$26.9
REVENUES					
Subtotal - Local Tax Revenues	177.7	187.0	195.7	199.9	208.7
Subtotal - Intergovernmental Revenues	252.0	273.2	294.6	316.1	335.1
Subtotal - Other Local Revenue	19.6	20.2	20.8	21.5	22.2
TOTAL REVENUES	\$449.2	\$480.4	\$511.2	\$537.5	\$566.0
Total Program Funding	\$375.4	\$404.8	\$434.3	\$460.0	\$487.4
EXPENDITURES					
Salaries	268.1	286.2	306.4	327.6	348.9
Benefits	65.4	74.3	84.5	95.9	108.2
Operating	41.4	44.6	46.4	48.4	50.1
Charter School Transfer (based upon Charter's FPC x PPR)	20.8	22.1	23.5	24.9	26.3
Charter Schools' Share of '03 Override (@ \$251/FPC)	0.5	0.5	0.6	0.6	0.6
Allocation to Hope Online	27.0	27.0	27.0	27.0	27.0
Capital Reserve Fund Transfer	11.6	13.6	14.7	15.8	16.9
Insurance Reserve Transfer	2.7	2.8	2.9	3.0	3.1
Athletic & Activities Fund Transfer	4.8	5.1	5.6	5.9	6.2
Fund 29 Transfer: Mil Levy Override Fund	5.0	5.0	5.0	5.0	5.0
Contingency ~ Reserve for Schools	0.9	1.2	1.2	1.2	1.2
Contingency ~ Full-Day Kindergarten Program	2.2	4.2	4.2	4.2	4.2
Contingency ~ General Operating	0.9	0.9	0.9	0.9	0.9
Reductions	0.0	-8.8	-13.3	-24.1	-33.9
TOTAL EXPENDITURES	\$451.4	\$478.7	\$509.6	\$536.2	\$564.6
CHANGE IN FUND BALANCE	-2.1	1.7	1.5	1.3	1.4
BEGINNING FUND BALANCE	\$24.5	\$22.3	\$24.0	\$25.6	\$26.9
ENDING FUND BALANCE	\$22.3	\$24.0	\$25.6	\$26.9	\$28.3
Ending Fund Balance - as % of Total Revenues	5.00%	5.00%	5.00%	5.00%	5.00%

* Reductions
are in year
only

General Fund and Other Funds' Budgets FY 2008-09 Revenues

REVENUES BY FUND (in millions)	FY'09		
Fund	2009 Budget	Alloc Per Pupil	Percent of Budget
General Fund	\$ 449.24	\$ 7,975	71.8%
Debt Service/Bond Redemption Fund	60.95	1,082	9.7%
Building Fund	3.50	62	0.6%
Capital Reserve Fund	12.26	218	2.0%
Govtl Designated Purpose Grant Fund	11.10	197	1.8%
School Discretionary Fund	2.95	52	0.5%
Nutrition Services Fund	13.02	231	2.1%
Child Care Fund	9.79	174	1.6%
Private Purpose Trusts	0.10	2	0.0%
Pupil Activity Fund	3.36	60	0.5%
Medical Self-Insurance Fund	40.48	719	6.5%
Insurance Reserve Fund	2.72	48	0.4%
Athletic and Activities Fund	11.13	198	1.8%
Mil Levy Override Fund	5.00	89	0.8%
TOTAL	\$ 625.60	\$ 11,106	100.0%

General Fund and Other Funds' Budgets FY 2008-09 Expenses

EXPENDITURES BY FUND (in millions)	FY'09		
	2009 Budget	Alloc Per Pupil	Percent of Budget
General Fund	\$ 451.39	\$ 8,013	62.5%
Debt Service/Bond Redemption Fund	60.82	1,080	8.4%
Building Fund	93.88	1,667	13.0%
Capital Reserve Fund	13.49	240	1.9%
Govtl Designated Purpose Grant Fund	11.28	200	1.6%
School Discretionary Fund	2.60	46	0.4%
Nutrition Services Fund	13.00	231	1.8%
Child Care Fund	10.18	181	1.4%
Private Purpose Trusts	0.82	1	0.1%
Pupil Activity Fund	3.00	53	0.4%
Medical Self-Insurance Fund	40.47	719	5.6%
Insurance Reserve Fund	3.82	68	0.5%
Athletic and Activities Fund	11.27	200	1.6%
Mil Levy Override Fund	5.97	106	0.8%
TOTAL	\$ 721.99	\$ 12,805	100.0%

Other Funds FY 2008-09 Changes

FUNDS	PROPOSED BUDGET 2008-2009			CHANGES			ADOPTED BUDGET 2008-2009		
CAPITAL RESERVE FUND	\$	13.41	M	\$	0.09	M	\$	13.50	M
SCHOOL DISCRETIONARY FUND	\$	2.28	M	\$	0.32	M	\$	2.60	M
CHILD CARE FUND	\$	10.17	M	\$	0.01	M	\$	10.18	M

Future Agenda

- **Revise enrollment numbers as needed per October count**
- **Impact of FY2007-08 Audited Financial Statements**
- **The Effect and Future of Student Based Budgeting**
- **Presentation of Revised Budget Prior to December 31, 2008 as needed**

Supplemental Budget and Appropriation Resolution for FY 2007-08

- **Medical Self-Insurance Fund**
- **Nutrition Services Fund**
- **Child Care Fund**
- **Govtl Designated Purpose Grant Fund**
- **Pupil Activity Fund**
- **School Discretionary Fund**

Supplemental Resolution for Use of Beginning Fund Balance for FY 2007-08

- **Nutrition Services Fund**